

"Confetti" Earrings  
Design by *Angel Accessories*

*"Confetti"*  
Design by *Angel Accessories*



AMOS® PAR PUCA® - PARIS COLLECTION MISHMASH  
( YELLOW, ROSE , VIOLET)

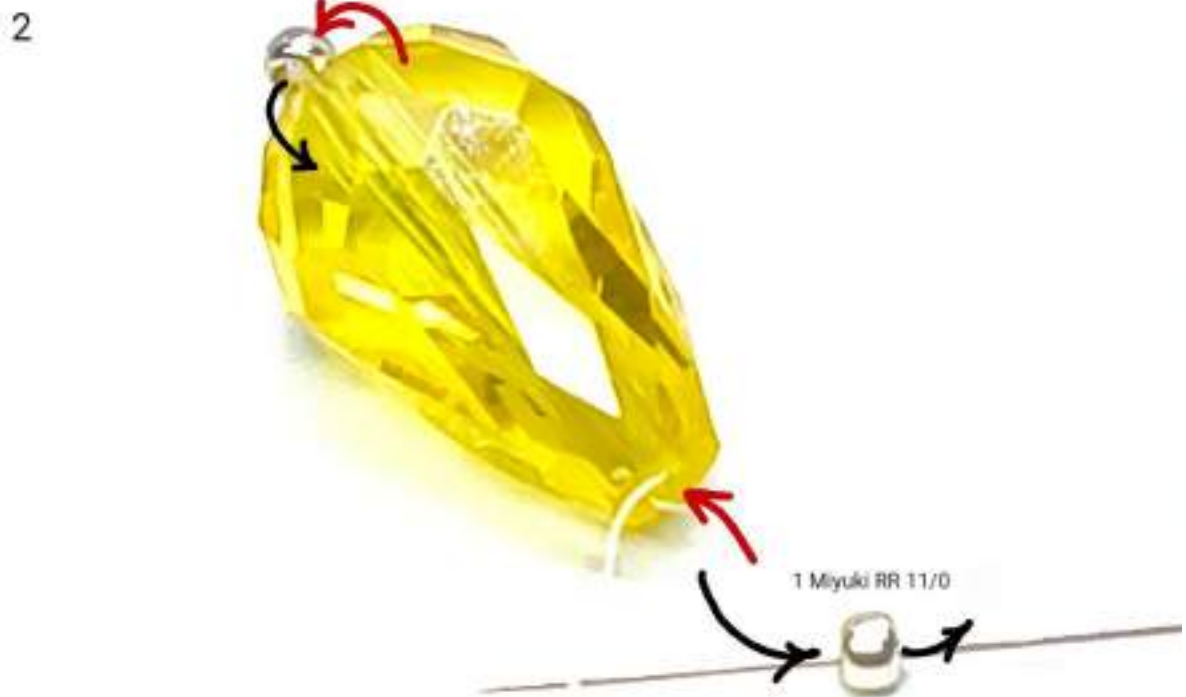
Materials for 1 earring:

- AMOS® PAR PUCA® - PARIS COLLECTION MISHMASH (YELLOW 4 pcs, ROSE 4 pcs, VIOLET 3 pcs)
- Teardrop Faceted Bead Citrine 1 pcs
- Fire Polished 4 mm Crystal Champagne 8 pcs
- Turquoise beads (3 mm - 14 pcs), (4 mm - 1 pcs)
- Fireline 4 lb (135 cm)
- Earring hook
- Miyuki Round Rocailles RR 15/0 Galvanized Gold
- Miyuki Round Rocailles RR 15/0 Galvanized Silver
- Miyuki Round Rocailles RR 11/0 Galvanized Silver
- Miyuki Round Rocailles RR 8/0 Galvanized Silver

✳ The length of the earrings is approximately 7 cm.



- The first step in making the earring is assembling the earring base.
- Pass the needle through the drop crystal (see picture 1) and attach a Miyuki RR 11/0 bead. Return with the needle through the crystal. Insert a new Miyuki RR 11/0 bead onto the needle, tie a knot and thread it back into the crystal. Pull the thread tight so that the knot goes inside the crystal.
- Pass through the Miyuki RR 11/0 bead at the end and return to where you started (see picture 2)



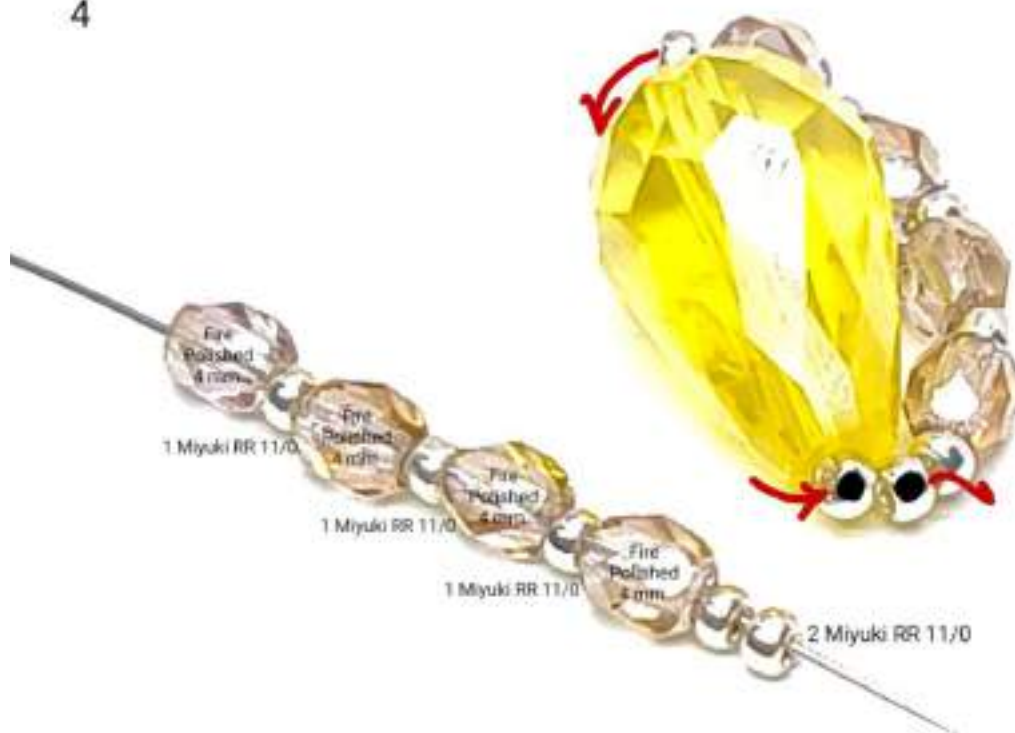
- The next step is to cover the drop crystal with 4 mm Fire Polished beads.
- Insert the beads onto the needle as in picture 3.
  - ✦ The end of the earring where you will attach the hook will be on the round and widest part of the drop crystal.
- At this point you are working without considering which is the front or back of the earring. Be sure to arrange and tighten the beads very well so that no thread or space is visible between them.

3



- After you have attached all the beads, pass the needle through the fixed Miyuki bead and through the next one (see picture 4)

4



- The next row will be worked using the peyote method. You will cover all the Miyuki beads on the row with other Miyuki RR 11/0 beads. The exception is the crystal heads. (Vezi sagetile rosii).

5



6



7



1 Miyuki RR 11/0



8



1 Miyuki RR 11/0



- The starting point of each row will be in the thin part of the drop crystal.
- At the moment you will not be working on the ends of the crystal, so you will pass the needle through the beads marked in black.
- After you have arranged the beads and tightened the thread very well, insert Miyuki RR 15/0 onto the needle 4 as shown in picture 9.

9



- Cover each Fire Polished bead with 4 Miyuki RR 15/0 beads. Skip the 2 at the end of the crystal.

10



- Works on both sides of the crystal.

11



- After inserting the last group of 4 Miyuki RR 15/0, bring the needle out above the fixed bead at the end of the crystal.

12



- Here you will insert 3 Miyuki RR 15/0 beads (see picture 13).
- Pass the needle through the marked beads and you will pass to the other side of the drop crystal.

13



- You will cover the Fire Polished beads as on the previous side.

14



- When you reach between the 2 Fire Polished beads at the end, insert 3 Miyuki RR 15/0 beads as on the other end.

15



- Continue working in rows until you reach the narrow part of the crystal. Pass the needle through the beads marked in black. (See red arrows).
- It's time to give the earring even better stability. Between the Fire Polished wire beads you will insert a Miyuki bead.

16



4 Miyuki RR 15/0



- The first bead inserted will be a Miyuki RR 8/0. The rest of the beads inserted will be Miyuki RR 11/0. (Vezi sagetile rosii!)

17



18



19



- The last bead will also be a Miyuki RR 8/0.
- The earring base has become very stable, so you can move on to adding the Amos beads.

20



- Insert 3 Amos beads on the needle, separated by one Miyuki RR 15/0 bead.
- Follow the steps in the following pictures.

21



22



23



- The turquoise beads added to the top of the drop crystal will be the base for the earring's hook.

24



- You will work in the mirror on the other side of the drop crystal.

25



26



4 Miyuki RR 15/0

1 Miyuki RR 8/0



27



4 Miyuki RR 15/0



- Add the next 3 Amos beads.

28



- Insert the next group of beads from picture 29 between the 2 Miyuki RR 8/0 beads.

29



- You will work the following steps on top of the Amos beads.
- After you have exited the Miyuki RR 8/0 bead with your needle, insert 1 Miyuki RR 15/0, 1 turquoise and 1 Miyuki RR 15/0 onto the needle. Insert the needle into the Miyuki RR 15/0 bead between the purple and pink Amos.
- After you exit the Miyuki bead from the 2 Amos, go through the marked Miyuki bead next to the turquoise.

30



- Thread 1 turquoise needle and 1 Miyuki RR 15/0. Insert the needle into the Miyuki RR 15/0 bead between the pink and yellow Amos.

- You return with the needle through the marked Miyuki RR 15/0 bead, the one next to the turquoise.

31



- Insert a new turquoise and a Miyuki RR 15/0 bead onto the needle. Insert the needle into the Miyuki RR 11/0 bead, at the bottom, the marked one.
- You return with the needle through the Miyuki RR 15/0 bead next to the turquoise.

32



- Here you will add a new turquoise. It will form a small flower.
- Thread the needle into the marked beads. Specifically, pass through the Miyuki RR 15/0 bead, the Miyuki RR 8/0 bead, enter the purple Amos, pass through the Miyuki RR 15/0 and the 2 turquoise ( \* follow the red arrows!)

33



- You will add a Miyuki RR 15/0 bead in the middle of the new turquoise flower. You will only work in the 2 marked turquoises. Follow the arrows!

34



- Go back through the middle Miyuki RR 15/0 bead. Tighten the thread so that it is not visible.
- Pass the needle through all the marked beads and exit after the gold ones are finished.

35



- This is where you will insert a turquoise. Continue to pass the needle through all the marked beads. Exit immediately after the Miyuki RR 8/0 bead.

36



- Insert 3 Miyuki RR 11/0 beads. Pass the needle through the marked beads and come out after the turquoise.
- Here you will make the base for the earring hook.

37



38



2 Miyuki RR 8/0



- You will work the same steps as the previous one.

39



40



1 turquoise 3 mm

- You have passed the needle through the Miyuki RR 11/0 bead. Insert 1 Miyuki RR 15/0, 1 turquoise and 1 Miyuki RR 15/0 onto the needle. Pass the needle through the Miyuki RR 15/0 bead from the 2 Amos.
- Go back through the Miyuki RR 15/0 bead next to the turquoise

41



- Pick up 1 turquoise and 1 Miyuki RR/0. Thread the Miyuki RR 15/0 bead between the 2 Amos beads. Return through the Miyuki RR 15/0 bead next to the turquoise.

42



- Repeat the steps. After entering the Miyuki RR 8/0 bead, go back through the Miyuki RR 15/0 bead next to the turquoise but before that, place the thread next to Amos so that it is as little visible as possible.

43



44



- After you have made the second turquoise flower, go ahead and add the Miyuki RR 15/0 bead, gold next to the 4 mm turquoise.

45



- Insert the beads from position 46 onto the needle.

46



- Insert one Miyuki RR 8/0 bead between the Amos beads.

47



- Go through all the marked beads and over the group of 3 Miyuki RR 11/0 beads, insert a gold Miyuki RR 15/0 bead (first red arrow).

✦ At this step I forgot to take a picture. Sorry! 😞

- After inserting the gold Miyuki RR 15/0 bead, pass through all the marked beads and exit with the needle before the turquoise.

48



- Take a 4 Miyuki RR 15/0 on needle and cover the turquoise. Exit through the Miyuki RR 8/0 bead.

✳️ I hope you can see the Miyuki RR 15/0 gold bead 😊

49



4 Miyuki RR 15/0



- You can add the earring hook.

50



- Cover the turquoise with 4 Miyuki RR 15/0. Be sure to place them aesthetically.
- Bring the needle out at the base of the 3 Miyuki RR 11/0 beads. There you will insert 1 gold Miyuki RR 15/0.
- Continue working on the front side of the drop crystal.

51



52



53



54



- Take 2 Miyuki RR 15/0 beads on the needle and tie to the upper loop of the Amos bead.
- Insert a Miyuki RR 15/0 bead between the yellow and pink Amos.

55



56



- Insert 6 Miyuki RR 15/0 beads and the purple Amos onto the needle.
- After you have exited Amos with the needle, take 3 Miyuki RR 15/0 beads and enter according to the marked beads.

57



58



- Insert a Miyuki RR 15/0 bead between the 2 Amos beads

59



- Tie the Amos with 2 Miyuki RR 15/0 beads. Pass the needle through the 2 marked Miyuki RR 15/0 beads.

60



- Insert 5 Miyuki RR 15/0 beads onto the needle and thread into the tip of 3 Miyuki RR/15/0 beads on the crystal.
- Go back through the first Miyuki RR 15/0 bead (see the bead on the needle, marked)

61



- Repeat the previous steps. With 4 Miyuki RR 15/0 on the needle, go through the 2 marked Miyuki RR 15/0 beads.



- Insert 5 Miyuki RR 15/0 beads onto the needle and tie to the Miyuki RR 15/0 bead between the 2 pink Amos beads.
- Go back through the marked Miyuki RR 15/0 bead on the needle.



- Take 4 Miyuki RR 15/0 beads on the needle. Pass the needle through all the marked beads. Exit according to the red arrow.

64



- Here you will insert a Miyuki RR 11/0 bead to obtain a much firmer shape of the earring.

65



- After inserting a Miyuki RR 11/0 bead here, go through all the marked beads once more.
- Arrange the beads and tighten the thread. Because the earring is ready, if the remaining thread allows you, you can pass through all the beads on the edge of the earring.
- Before cutting the thread, arrange the beads, secure them very well, and only then can you cut it.

66



67



I hope you liked it! 🍀